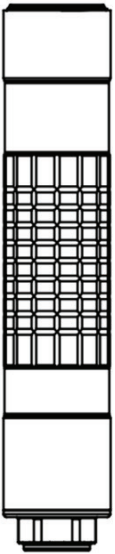
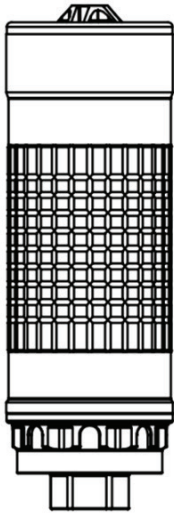




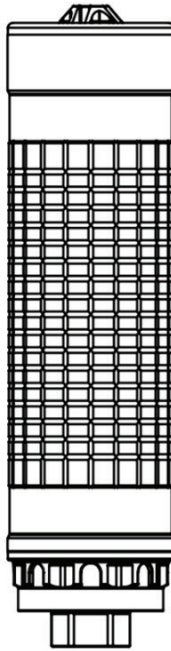
IWI US Silencers Operator's Manual



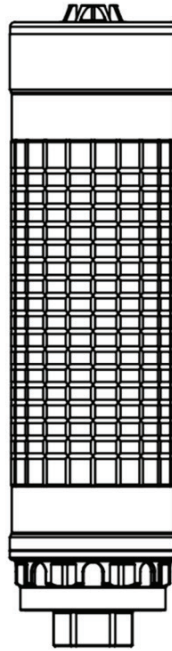
IWS22



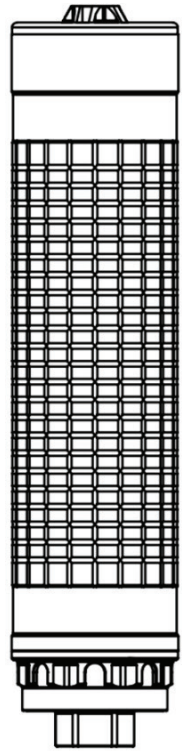
IWS6K



IWS6



IWS762



IWS762TI

Table of Contents

Safety Precautions	2
Silencer Specifications	3
Silencer Technology	3
Silencer Nomenclature (Centerfire)	4
Spanner Multitool (Centerfire)	5
Silencer Nomenclature (Rimfire)	5
Attaching Direct Thread Silencer	6
Removing Direct Thread Silencer	7
HUB Installation & Removal	7
Silencer & Bore Alignment	7
IWS22 Disassembly	8
IWS22 Reassembly	9
Silencer Maintenance	10
Limited Lifetime Warranty & RMA	11

Safety Precautions

Safety Precautions

- Ensure the host firearm is UNLOADED before mounting or removing the silencer, cleaning, storage, or shipping
- Wear proper eye protection when firing or cleaning the silencer or host firearm.
- Depending on the host firearm, ammunition combination, and environmental conditions, firing may produce sound levels above recommended ear safety thresholds. Always wear hearing protection to prevent hearing damage.
- Silencers are user-attached to firearm muzzles; it is crucial to follow proper mounting procedures. An improperly mounted silencer can cause bodily harm, silencer damage, or damage to the host firearm.
- For silencers with muzzle device mounts, check for proper muzzle device fit before mounting. The mount must fully contact the barrel's shoulder, with no visible gap.
- When mounting the silencer, ensure it is fully seated and tightened on the muzzle brake.
- Ensure the silencer internals and bore remain free of obstructions such as dirt, mud, or other foreign debris. NEVER attempt to fire with an obstructed bore, as it may cause bodily harm, silencer damage, or damage to the host firearm.

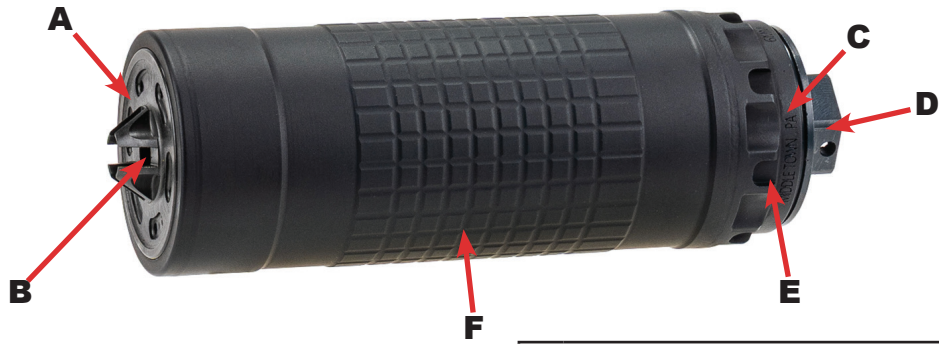
Silencer Specifications

	IWS22	IWS6K	IWS6	IWS762	IWS762Ti
Length	6" (132mm)	4.9" (123 mm)	6.4" (162 mm)	6.4" (162 mm)	7.4" (185mm)
Diameter	1.19" (30.5mm)	1.74" (44.5mm)	1.74" (44.5mm)	1.74" (44.5mm)	1.74" (44.5mm)
Weight (w/o mount)	6 oz (142g)	14 oz (450 g)	18 oz (552 g)	18 oz (552 g)	13 oz (368g)
Caliber/ Bore	.22	.243 / 6mm	.243 / 6mm	.30 / 7.62mm	.30 / 7.62mm
Material	Titanium, SS, Aluminum	Nickel Alloy & Stainless Steel	Nickel Alloy & Stainless Steel	Nickel Alloy & Stainless Steel	Titanium
End-Cap Design	Removable	Removable Vented	Removable Vented	Removable Vented	Removable Vented
Cartridge Rating	Up to 5.7x28mm	Any 6mm Cartridge	Any 6mm Cartridge	Any 7.62mm Cartridge	.300 Norma
Full Auto Rated	Yes	Yes	Yes	Yes	No
Included Muzzle Device	1/2x28 Direct Thread	1/2x28 Hub + Adapter	1/2x28 Hub + Adapter	5/8x24 Hub + Adapter	5/8x24 Hub + Adapter
User Serviceable	Yes	Not Required	Not Required	Not Required	Not Required

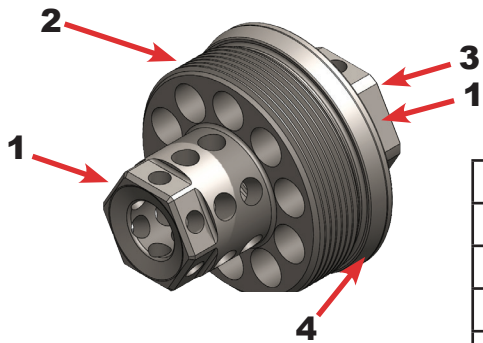
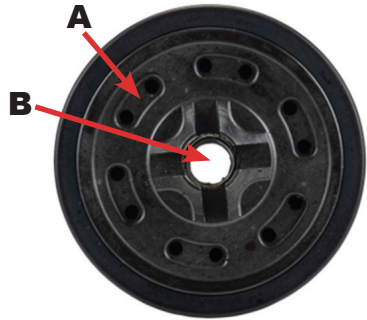
Silencer Technology

IWI Silencers feature designs which decrease the silencers backpressure without significant sacrifice to the level of suppression. This reduced backpressure design minimizes the excess gas blowback towards the user, thereby reducing the inhalation of harmful chemicals emitted during the regular operation of any suppressed firearm, while also creating a more pleasant shooting experience overall.

Silencer Nomenclature (Centerfire)



Silencer	
A	Venting End Cap
B	Silencer Bore
C	Engraving/Markings
D	Tail cap (HUB Compatible)
E	Spanner Wrench Cuts
F	Frag Grip Texture

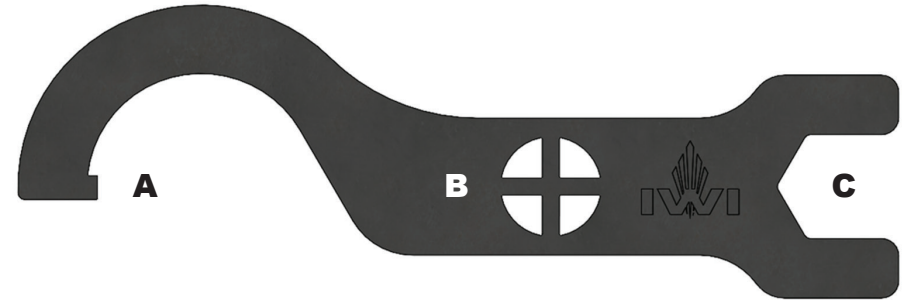


IWI HUB+ Direct Thread Adapter	
1	Wrench Flats
2	HUB Threads (1.375x24 TPI)
3	Muzzle Threads
4	Taper Mating Surface

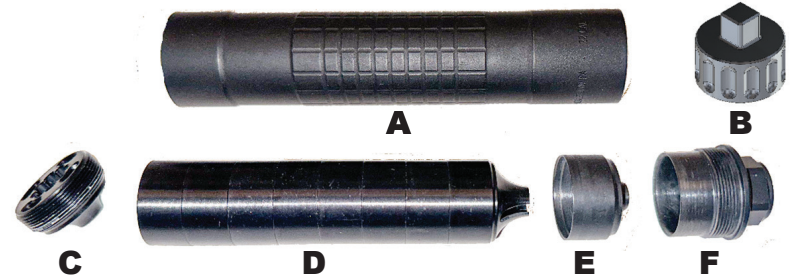
Spanner Multitool (Centerfire Models Only)

Included with all centerfire silencer models is a Spanner Wrench Multitool with 3 key functions:

- A. Standard spanner wrench to interface with the spanner wrench cuts on the rear of the silencer body.
- B. Front end cap removal tool that can be placed into the flash hider cuts of the endcap.
- C. 3/4"/19mm wrench slot for direct thread Hub device wrench flats.



Silencer Nomenclature (Rimfire)



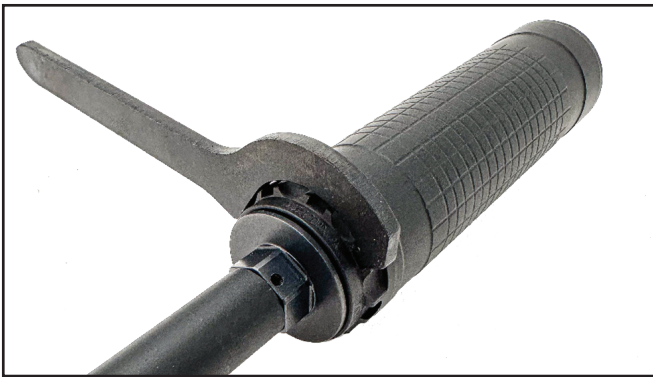
A	Body Tube (Ti)
B	Tool (Al)
C	Front Cap (Al)
D	Baffles (Al)
E	Blast Baffle (SS)
F	Rear Mount (Steel)

Attaching Direct Thread Silencer

1. Align the bottom of the silencer with the muzzle threads.
2. Screw-on the silencer in a clockwise direction until it completely stops.
3. Firmly grasp the silencer and host firearm and firmly attempt to rotate further to ensure secure attachment. Verify the silencer is firmly seated for safe and proper function.
4. For best results, utilize a 3/4" or 19mm wrench for extra force to ensure silencer is securely attached to muzzle device.



NOTE: In a pinch, a spanner wrench may also be used to snug the silencer down for installation, but do not do this while the silencer is hot as it could make removal later more difficult.



Removing Direct Thread Silencer

1. Grasp silencer at the grasping grooves and hold onto the host firearm.
2. Un-screw the silencer in a counterclockwise direction.
3. Once the silencer is free of the muzzle threads, slide the silencer off the muzzle.
NOTE: After extensive firing, carbon buildup can make the silencer hard to remove. Use a 3/4" or 19mm wrench to get additional leverage for removal.

HUB Installation and Removal

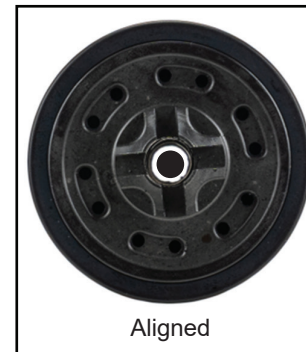
1. To remove the rear hub mount, use the included spanner wrench on the silencer body to prevent rotation while using a 3/4" or 19mm wrench on the hex wrench flats on the hub, to rotate the hub counterclockwise while facing you.
2. To install the above process may be used in reverse, with the hub rotating clockwise to tighten.

Silencer & Bore Alignment

Before firing your silencer for the first time on a host firearm, use a silencer bore alignment rod to verify total system alignment. Ensure a proper fitting rod is used for accurate verification, considering potential variances in barrel dimensions and rod specifications.

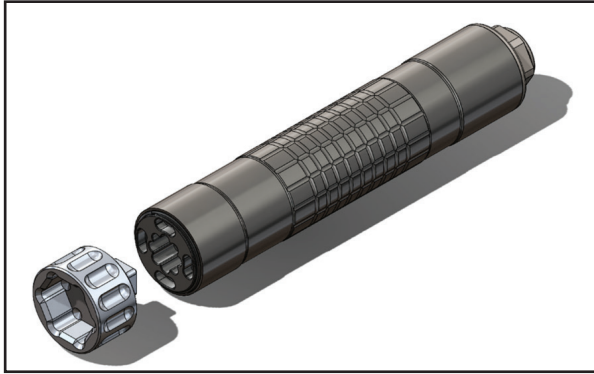
If misalignment is detected, please promptly contact Customer Support.

REMOVE BORE ALIGNMENT ROD BEFORE FIRING!

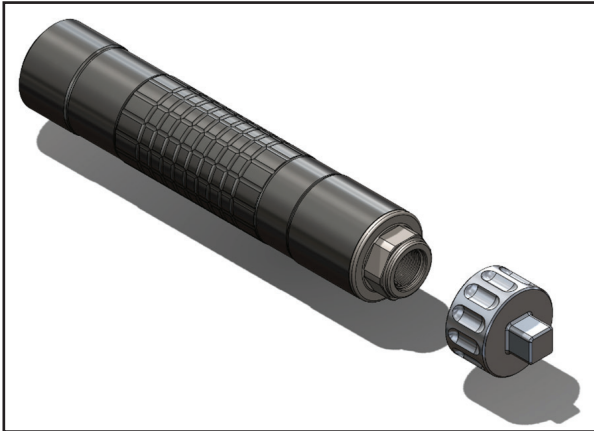


IWS 22 Disassembly

1. Grasp the silencer and insert male end of the IWS22 Assembly/Disassembly tool into the front cap. Use the tool to unscrew counterclockwise until the front cap is removed from the silencer.



2. The baffles may freely fall out, or if heavily fouled may stay in place.
3. To remove the rear mount, attach the female end of the tool to the rear mount and unscrew counterclockwise.



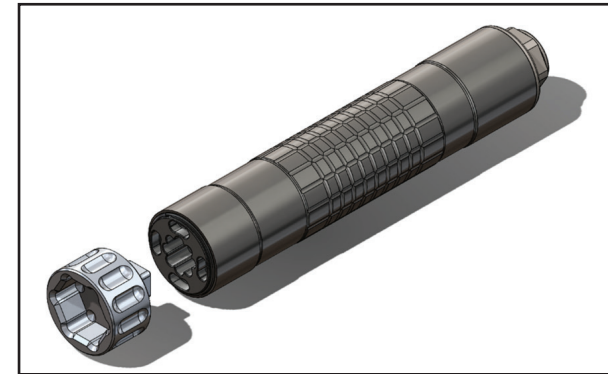
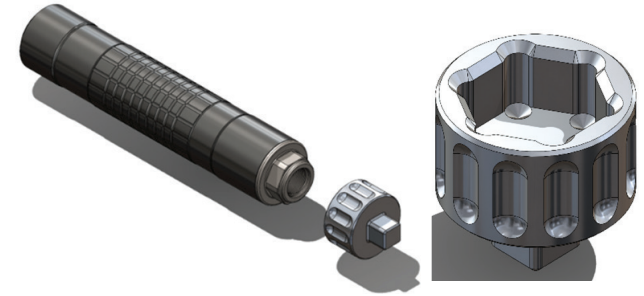
4. If the baffles do not freely fall out, insert a wood or delrin rod from the back end. A gentle push will push the baffles out (beware of baffles separating and falling free as they come out of the tube).



IWS22 Disassembled

IWS 22 Reassembly

1. Attach the rear mount to the rear of the silencer, tightening clockwise. Use the tool to tighten until snug.
2. The baffle stack components may be inserted individually, or pre-stacked and inserted together. The blast baffle is closest to the rear mount, and must be oriented as indicated by the engraving, with the arrow facing the muzzle direction.
3. The baffles have been designed where they do NOT need to be indexed or kept in the same sequence during reassembly. Simply stack the baffles together and insert with the cone end facing the rear of the silencer.



5. Attach the front cap to the silencer, tightening with the tool until snug.

NOTE: The end cap may not fit flush with the end of the tube when the silencer is new or has a low round-count. This is a design feature to ensure a tight stack fitment, even as the baffles compress slightly from wear.



Firing Schedules & Service Life

IWI Silencers are duty-grade, and incorporate a design that efficiently moves gas away from the shooter and host firearm. However, after many firing sessions, carbon accumulation can occur within the silencer and create performance degradation, and cleaning may be required to restore performance.

A best practice is to weigh your silencer when new, and denote that initial weight. Then periodically weigh it during host firearm maintenance to measure fouling. If several ounces have been accumulated, a heavy cleaning cycle should occur.

Regular Maintenance

Routine maintenance for IWI silencers is minimal. During standard host weapon maintenance, clean and inspect the mounting surfaces of both the silencer and the muzzle device.

Use a brush to eliminate carbon and copper fouling from accessible surfaces. Common gun cleaning chemicals are suitable. Wipe clean or rinse with water and dry.

Heavy Cleaning

Perform a more thorough cleaning cycle for the silencer after several thousand rounds (2,000-3,000), on an annual basis, or as necessary due to fouling or loss of effectiveness.

- Place the silencer in a chemically resistant container or plug the muzzle and position it muzzle-down inside the container.
- Fill the container/silencer with CLR® cleaner, 30% Vinegar solution, OR similar silencer cleaner, and soak for 24 hours.

NOTE 1: Certain cleaning solutions or chemicals may cause color discoloration.

NOTE 2: Ultrasonic cleaners are a viable cleaning option, however discoloration or scratching may occur.

NOTE 3: CLR and some other chemicals will dissolve aluminum, and should not be used with the IWS22 rimfire silencer.

- Remove the silencer from the container and drain of fluid.
- Rinse the silencer with water.
- Brush any accessible carbon buildup and rinse with water again.
- Use compressed air to dry silencer internals.
- Fire 5-10 rounds of live ammunition to expel any loosened carbon and remaining fluids.

Muzzle Device

The muzzle device is a sacrificial component for heavy-use silencer, and may require replacement due to erosion, particularly with short barreled rifles. Periodically inspect the muzzle device during rifle maintenance and replace if necessary.

Warranty Statement

This policy pertains to Silencers only!

IWI US provides a conditional lifetime warranty on all our silencers against manufacturing defects or breakage associated with the intended normal use of the product. At the company's sole discretion, we will replace or repair our products as previously stated. Modified, abused, or misused products that require replacement, or repair may also be repaired by IWI US Silencers at the customer's expense.

IWI US does not assume any other additional express or implied warranties. The warranty policy does not apply, as stated, to modified, abused, neglected, or misused products outside the scope of their intended use. IWI US does not warrant or accept damages associated with operator error, host weapons, ammunition, or any other cause or event not specifically stated herein. Any or all the stated non-covered circumstances can cause death or injury to the user or another third party. IWI US neither expressly nor impliedly accepts any such liabilities.

Understanding that there is a constantly growing number of adapter and mount designs in the market, IWI US will only warranty silencers that are used with products on the IWI US Approved Adapters & Mounts List. This warranty gives you specific legal rights, and you may also have other rights which vary from State to State.

RMA

To submit a warranty claim, please submit the online form at <https://iwi.us/contact-us/> and have the below ready:

- Your Product In-hand
- A photo of your ID
- A copy of your Form 3 or Form 4

NOTICE: DO NOT SHIP THE SILENCER FOR REPAIR WITHOUT FIRST COMPLETING THE FORM AND RECEIVING A CONFIRMED RMA NUMBER. DO NOT SHIP IN ANY EVENT WITHOUT A COPY OF THE APPROVED BATF FORM.

When you ship the silencer back to the manufacturer, please include a printed copy of the completed RMA form which will be emailed to you by the IWI US Customer Service Department after your online form submission is received. If you have any questions or concerns, please contact our Customer Service Department at (717) 695-2081

If your silencer is not eligible for repair or replacement, you may purchase a replacement silencer at a fixed percentage off the MSRP for the same or similar silencer. Please contact our Customer Service Department for further details and requirements.



www.iwi.us



info@iwi.us



(717) 695-2081



#IWIUS