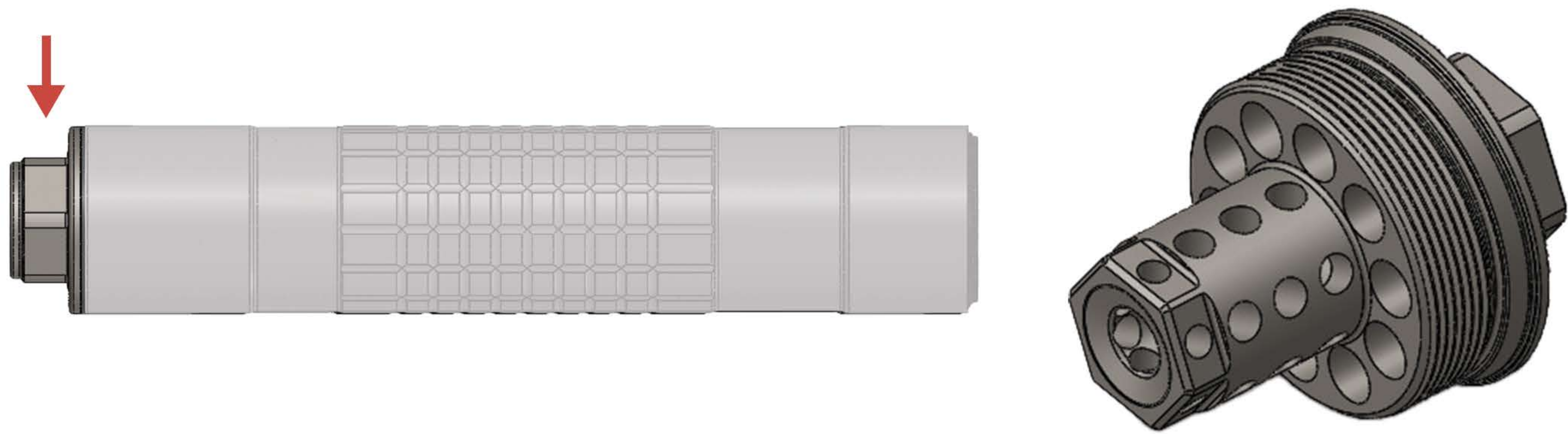


IWI HUB+ DIRECT THREAD ADAPTER

Silencer Specification Sheet

IWI offers silencers and their hardware built to the most exacting of standards. Our goal is to provide robust, reliable, high performance silencers to meet and exceed the stringent demands of modern military, law enforcement, and civilian shooters for their safety and performance..



SPECIFICATIONS

- ▶ MATERIALS: 4140 NITRIDED STEEL
- ▶ WEIGHT: 3.5 oz
- ▶ MUZZLE ATTACHMENT: DIRECT THREAD
- ▶ COLOR: C-SERIES CERAKOTE, BLACK
- ▶ FULL-AUTO RATED: YES
- ▶ BARREL RESTRICTIONS: BASED ON SILENCER

The IWI HUB+ mounting system is an enhancement of the universally recognized HUB (1.375x24) rear thread pattern. The inclusion of a taper surface for greater engagement between mount and silencer provides for a rock-solid attachment and the best efficiency and consistency for the muzzle and suppressor interface. IWI Silencers are reverse compatible with existing HUB systems. Check IWI.us for recommended HUB mounts.

The HUB+ currently features direct thread mounting for 1/2x28, 5/8x24, .500-28, .625-24, .750-24, and .750-24 SR25 threads. 1/2x28 and 5/8x24 are shipped with their corresponding base calibers. The others are available on request with an agency order and through the webstore.



Rev: Dec 2025